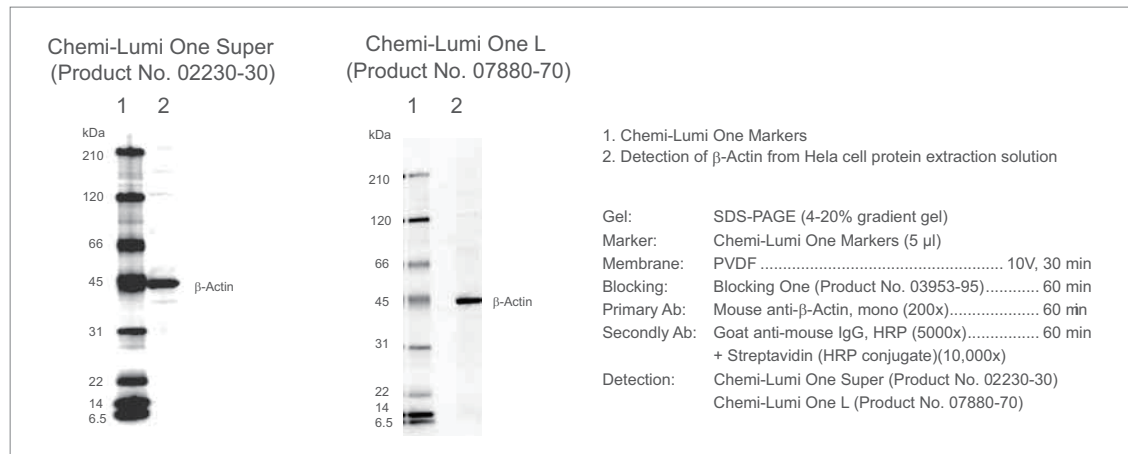


Chemi-Lumi One Markers Kit

- » Contains 8 biotinylated proteins as molecular weight markers (M.W. 6,500 - 200,000 Da)
- » Includes HRP conjugated Streptavidin to detect biotinylated proteins

Western Blotting for Detecting of β -Actin



Components

Components	Proteins	M.W. (kDa)
1. Chemi-Lumi One Markers PKG Size: 50 µl Solution of 8 biotinylated proteins	Myosin	210
	β -Galactosidase	120
	Bovine Serum Albumin	66
	Ovalbumin	45
	Carbonic Anhydrase	31
	Trypsin Inhibitor	22
	Lysozyme	14
	Aprotinin	6.5
2. Streptavidin (HRP conjugate) PKG Size: 250 µl Horseradish peroxidase conjugated streptavidin solution		

Note: The molecular weight of Chemi-Lumi One Markers may slightly differ from unmodified proteins because of biotinylation.

Ordering Information

Product Name	Storage	Product No.	PKG Size
Chemi-Lumi One Markers Kit	F	06456-70	1 kit

[Storage] F = Freezer